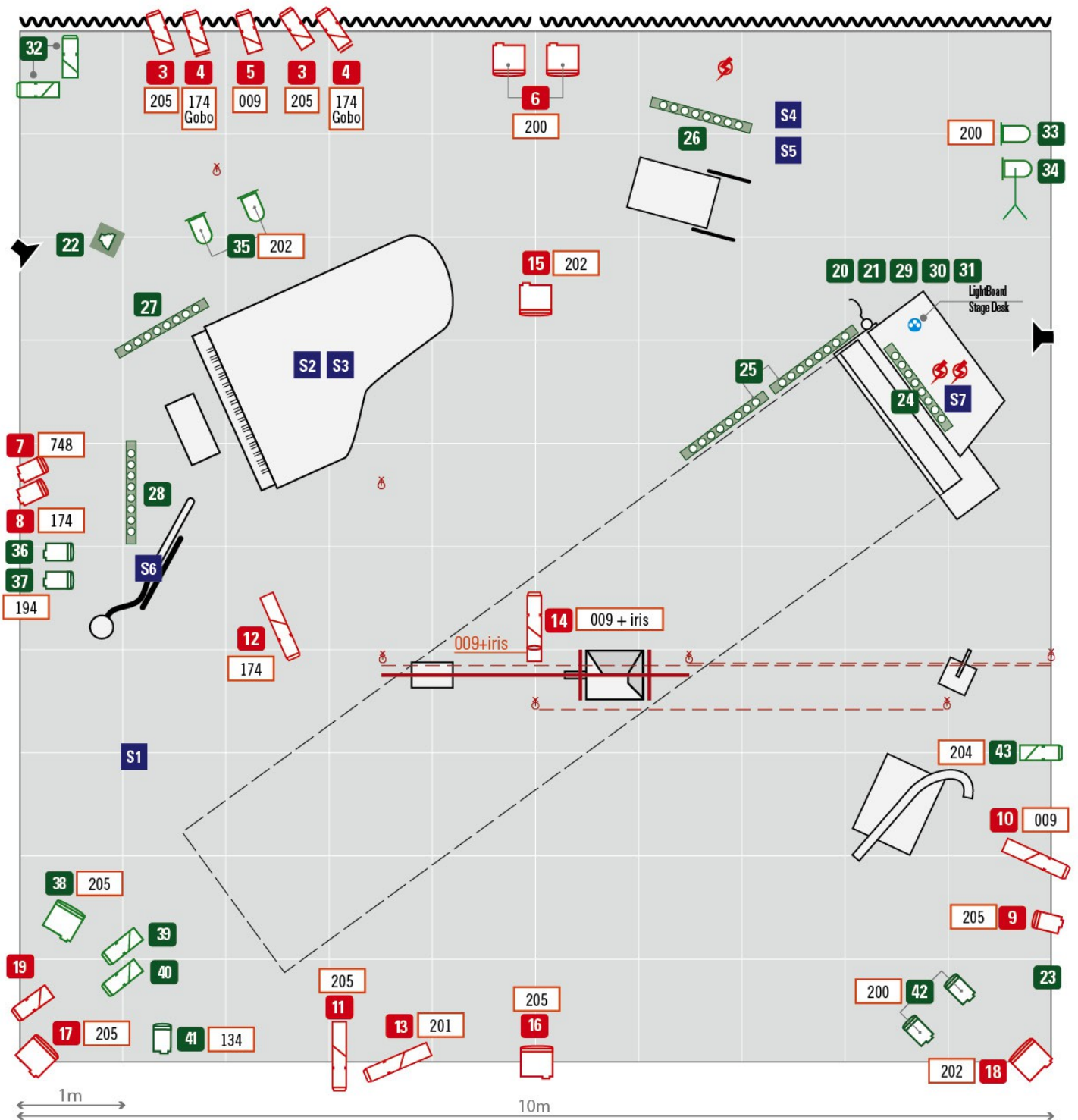
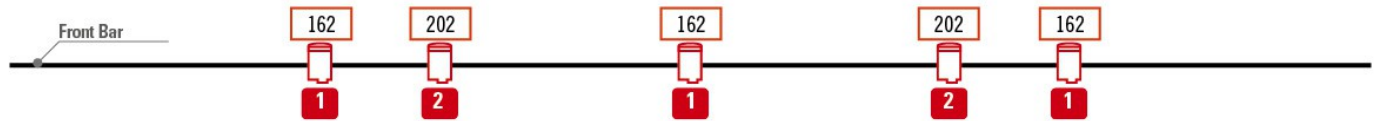


Tr'espace : Arbeit - Fiche Technique / Technical rider [2013.01]



PUBLIC



- grid channels
- floor channels
- PC 1kW
- PC 2kW
- Profile «long» $\leq 40^\circ$ (R.Juliat 614)
- Profile «short» $\geq 50^\circ$ (R.Juliat 613)
- Blinder - sol (supplied)
- PAR/CP61
- light stand
- F1 + stand floor
- Lightboard dmx line on stage
- Sxx sound channel
- stage monitor
- Hanging points + pulleys (supplied)
- 220/230V direct power supply

Light

Spotlights/	number	filters Fts	Lee	Rosco	Nb	filters Fts	Lee	Rosco	Nb
PC 1kW	13	Prof. 613/614	009	009	3	PC 1kW	134	321	1
PC 2kW	7	“	137	55	1	“	162	002	3
PAR - CP 61	4	“	174	64	3	“	174	64	1
Profile «long» $\leq 40^\circ$ (R.Juliat 614)	5	“	201	371	1	“	194	57	1
Profile «short» $\geq 50^\circ$ (R.Juliat 613)	11	“	204	16	1	“	200	--	2
Profiles : gobo holder	2	“	205	3442	3	“	202	372	2
Profiles : iris	1					“	748	--	1
F1 + platine sol	1	PAR	200	--	1	PC2kW	200	371X2	2
Blinders (10 dichroïques 75w)	6 (supplied)					“	202	372	2
Light stand H 2m.	1					“	205	3442	3

43 channels (+1 for control of audience/tier)

Dimmer rack : according our needs, to be installed and controlled on stage.

Important and necessary : The hanging of lights must be done before our arrival. (Otherwise : delays in timetable)

Grand Piano

The organizer provides :

A Grand piano (ideally between 1,70m and 2,30m, e.g. type Yamaha C6/C5 or 1/4 (type Yamaha C3)

The piano shall be at venue at arrival of company (= the night before) because of determination of the position of the lights.

The Grand piano must be tuned.

Sound

Patch:

channels	SOURCE	MICRO	D.I :	DIVERS
1	TOY PIANO	Capsule (supplied by the cie)	+ D.I	REVERB / Echo
2	PIANO LOW	SCHOEPS/KM184		
3	PIANO HIGH	SCHOEPS/KM184		
4	Object TOURNETTE	HF (supplied)		
5	Ampli GUITARE	SM57	(+ stand)	
6	Object ROUE	Capsule (supplied)	+D.I	
7	Object FOUR	Capsule (supplied)	+D.I	

Stage according to needs of company and ready-made for construction

"open" sound desk in the center of the tier (audience)

Sound system according to venue (L acoustics, Adamson, D&B, Nexco).

Digital mixer (01V96) or equivalent. In case of an analog mixer, please provide also Effects Processors (SPX900, SPX2000) plus reverb (Lexicon PCM 90).

31 bandwidth equalizer for PA

3 x Active DI-Box BSS AR-133

1 SM57

A grand piano and the corresponding microphones (KM184).

2 separated stage monitors (compare plan).

Plan also big lengths cables (jacks) and a multipair cable on stage for the backline.

We bring all capsules mics and also the wireless mic.

Stage:

10m wide, 9m deep minimum

Height under rigging: 6m minimum

Plane stagefloor-Flat without harshness, covered with a dancefloor perfectly jointed.

If possible, The stage should not be in height, or at the level of the tier's first rank.

Hanging points:

- in the center of the stage: 3 hanging points + pulleys fixed at grill or hanging batten & loft blocks + cleats, weight: 40 kg (pulleys + ropes brings by the compagnie)

Wardrobes:

2 wardrobes (1 for 2 persons m, 1 for 1 person f), heated, access to toilet / shower. Equipped with table, chairs, mirrors etc. Backstage catering for 4 persons : eau, coca cola, orange juice, tea + coffee, fruits (bananas), sandwiches, nuts, chocolate

Planning :

	Units (4h)	staff	
day. -1	16 :00 – 20 :00	1 stage technician 1 light technician	de-loading stage setting encoding + hanging light important : materials need to be put inside (locked)
day. 0	09 :00 – 13 :00	1 stage technician 1 light technician 1 sound technician	set up machines + objects set up light set up sound
	break		
	14 :00 – 18 :00	1 stage technician 1 light technician 1 sound technician	Rehearsal / details Dress rehearsal Pre-install / cleaning
	19 :00 – 20 :00	1 stage technician	Last preparation + cleaning of stage
	20 :00 – 21 :15	1 technician	show
	21 :30 – 23 :30	4 technicians	set down
Day + 1	09 :00 – 11 :00	Access to hall	Loading (we prefer to do loading the next morning)

Contacts:

Tr'espace : contact@trespace.com
 technician - light: Philippe Deutsch: deutsch@deutsch-art.com- +33 (0)6 15 74 52 56
 technician sound: Pierre Guillerme: guillermopedro@yahoo.fr+33 (0)6 63 08 77 21
 administration | production : Ute Classen : contact@trespace.com +49 171 9347239

Please contact us in advance / before our arrival if you cannot fulfil the requirements.
 We are open minded to find solutions.

www.trespace.com